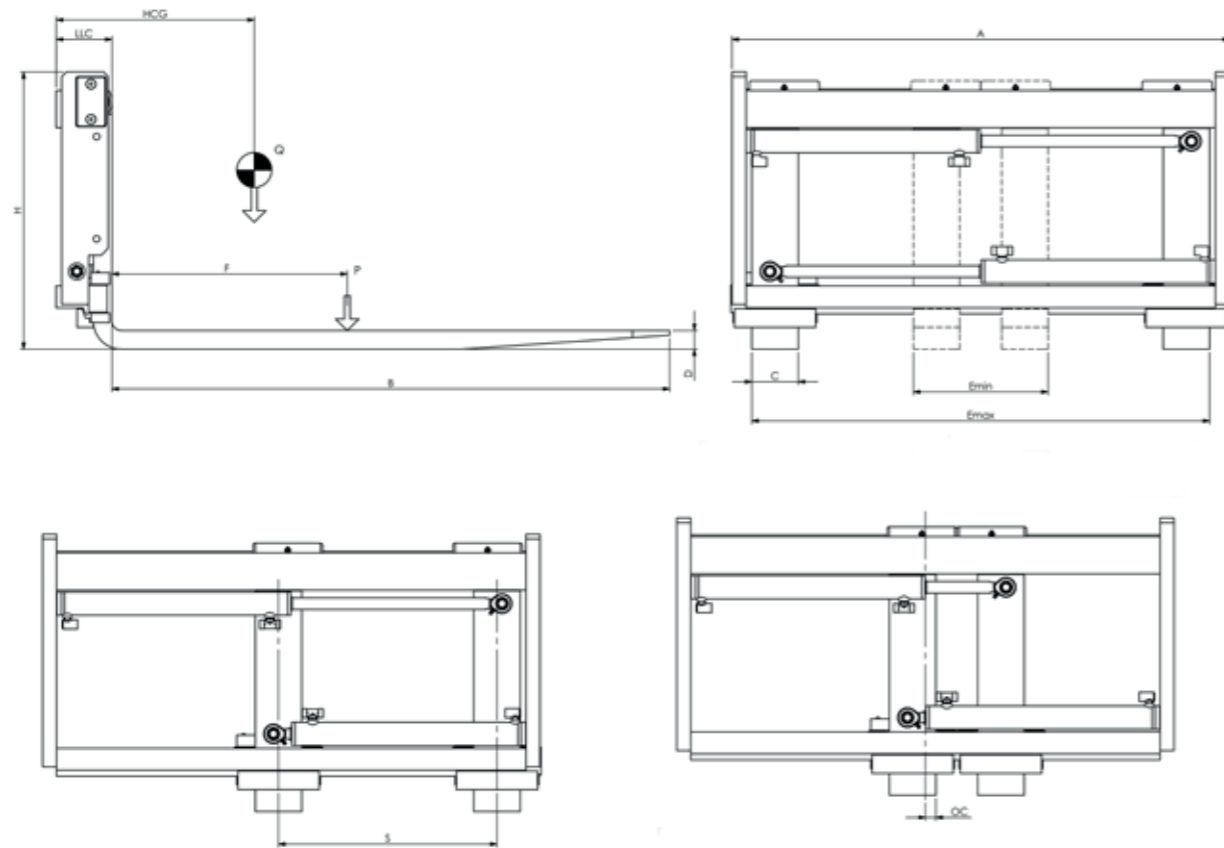


PMC 3

- Capacity 1800–2500 kg
- Integrated fork-positioning with sideshift
- Sideshift over center
- See picture with pallet for advantage for side shift over center
- Capacity, width, forks and opening ranges can be changed to customer request
- Fits counterbalance forklift trucks



Capacity (P)	Load center (F)	Width (A)	Unit dimensions					Over centrum ± (OC)	Weight (Q)	Article no PMC name - Width - forks - integration	Description Model-Capacity-Forks					
			H*	LLC	HCG	Emin*	Emax*					Sideshift, End to end (S)				
1800	500	920			267		835	340	23	128	55015A-XXXX-XX-XX	PMC3-1800-100x40x1200				
		970			243		885	365					149			
		1020			219		935	390						170		
		1070	596	120	171	290	1035	440							191	
		1120			147		1085	465								212
		1170			123		1135	490								
		1220							254							
2000	500	920			249		835	340	23	206	55016A-XXXX-XX-XX	PMC3-2000-100x40x1200				
		970			246		885	365					209			
		1020			243		935	390						212		
		1070	636	120	240	290	985	415							215	
		1120			237	290	1035	440								218
		1170			234		1085	465								
		1220			231		1135	490		224						
2500	500	920			234		835	340	23	220	55083-XXXX-XX-XX	PMC3-2500-100x40x1200				
		970			231		885	365					224			
		1020			228		935	390						228		
		1070	636	120	225	290	985	415							232	
		1120			222		1035	440								236
		1170			219		1085	465								
		1220			216		1135	490		244						

Q* Weights are estimated and can differ between customer request.
 H* Height is with the ISO 2328 Class A mounting
 Options: Capacity, width, forks and opening ranges can change to customer request.
 Emin* and Emax* in the table only shows the standard.

